

# PRODUCT INFORMATION PACKET

Model No: 132164.00

Catalog No: 132164.00

3HP..1750RPM.182.TENV./V.3PH.60HZ..NOT.40C.1.15SF.RIGID..C182T17NZ4A

Regal and are trademarks of Regal Rexnord Corporation or one of its affiliated companies.  
©2022 Regal Rexnord Corporation, All Rights Reserved. MC017097E



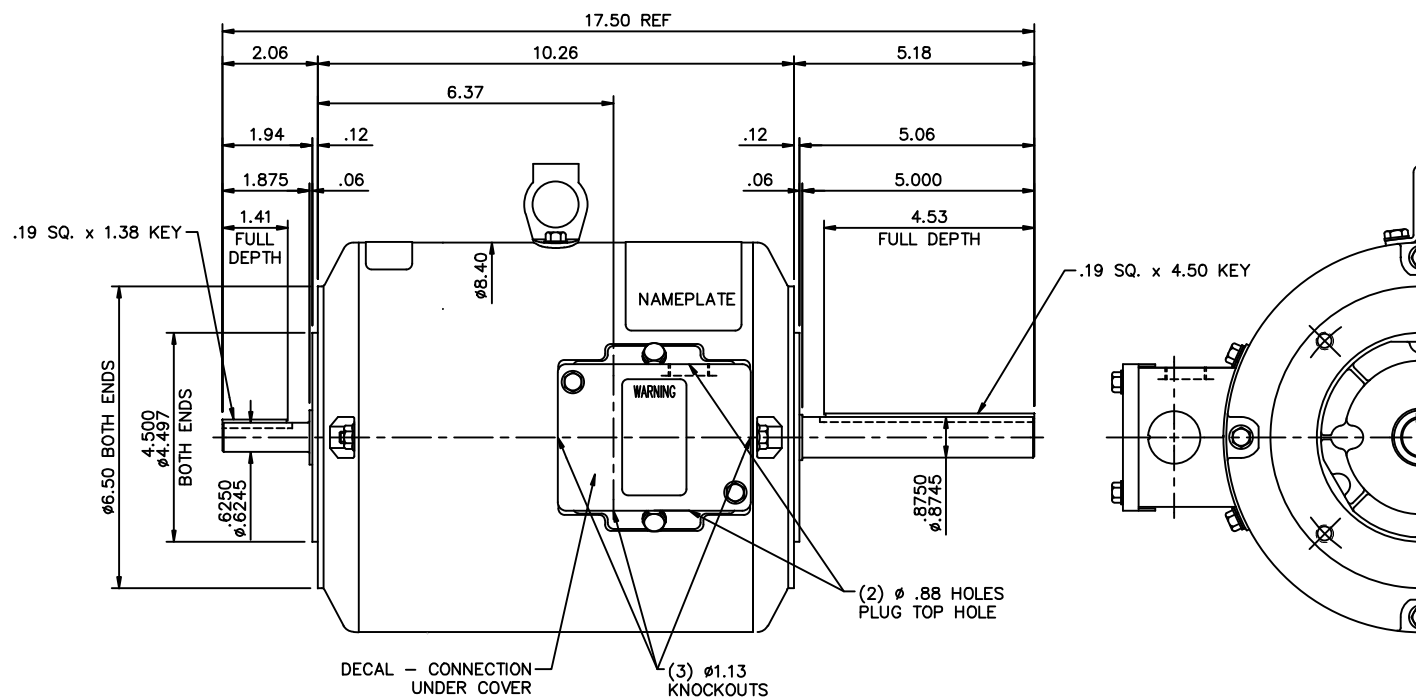
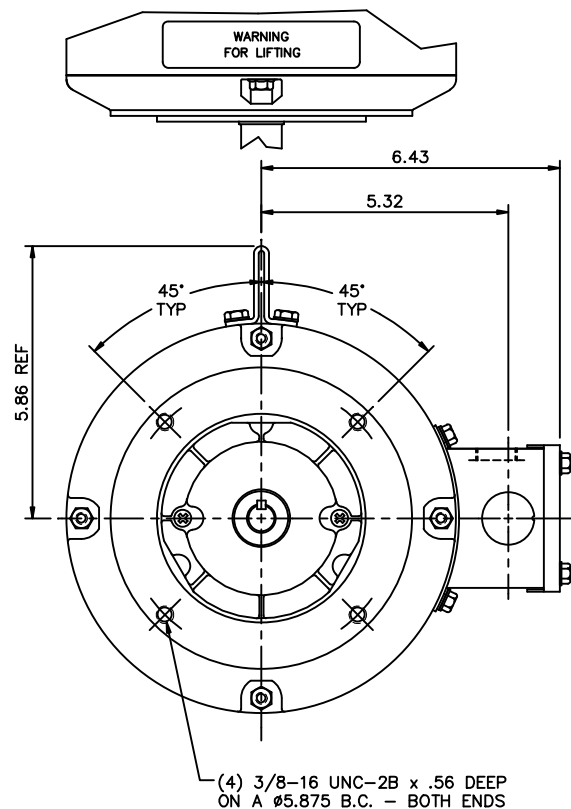
### Nameplate Specifications

Output HP	3 Hp	Output KW	2.2 kW
Frequency	60 Hz	Voltage	230 V
Current	8.8 A	Speed	1760 rpm
Service Factor	1	Phase	3
Efficiency	86.5 %	Power Factor	73.8
Duty	30 Minute	Insulation Class	F
Design Code	NO DESIGN CODE	KVA Code	K
Frame	182Y	Enclosure	Totally Enclosed Non Ventilated
Thermal Protection	No Protection	Ambient Temperature	40 °C
Drive End Bearing Size	6206	Opp Drive End Bearing Size	6205
UL	Recognized	CSA	Y
CE	N	IP Code	43
Number of Speeds	1		


### Technical Specifications

Electrical Type	Squirrel Cage Induction Run	Starting Method	Across The Line
Poles	4	Rotation	Reversible
Resistance Main	4.85 Ohms	Mounting	Rigid Base
Motor Orientation	Horizontal	Drive End Bearing	Ball
Opp Drive End Bearing	Ball	Frame Material	Rolled Steel
Shaft Type	Special Extension Both Sides	Shaft Diameter	0.625 in
Assembly/Box Mounting	F1/F2 CAPABLE		
Connection Drawing	005102.01	Outline Drawing	OL132164

This is an uncontrolled document once printed or downloaded and is subject to change without notice. Date Created:11/01/2022

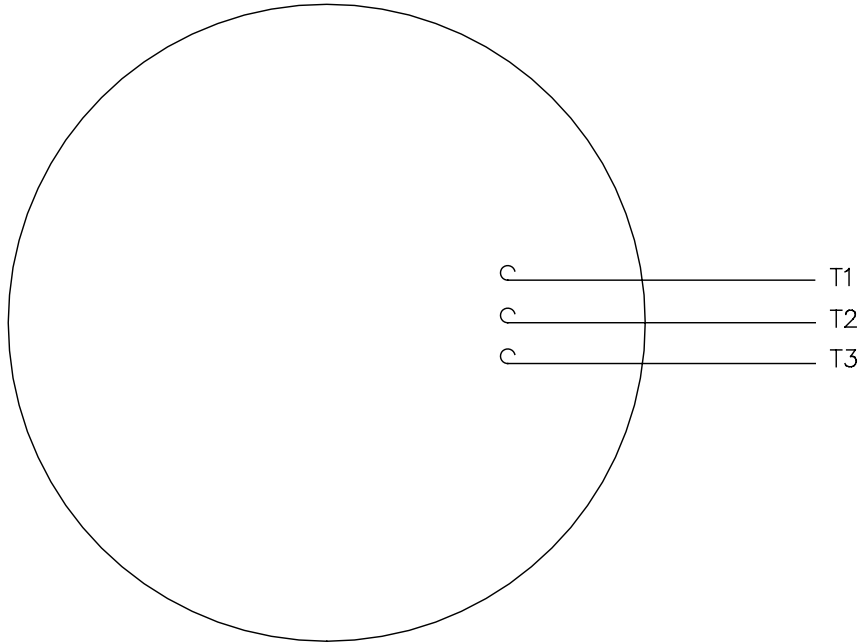


GASKETS THROUGHOUT  
 MAXIMUM FACE RUNOUT TO BE .004 T.I.R.  
 MAXIMUM PILOT ECCENTRICITY TO BE .004 T.I.R.  
 PERMISSIBLE SHAFT RUNOUT (DRIVE END) TO BE .002 T.I.R.  
 PERMISSIBLE SHAFT RUNOUT (OPP DRIVE END) TO BE .006 T.I.R.

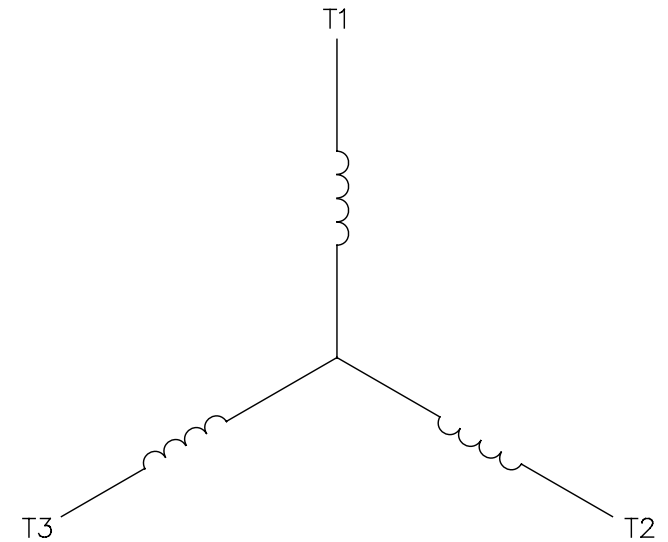
				TOLERANCES UNLESS SPECIFIED			ELECTRIC MOTORS GEARMOTORS AND DRIVES	DRAWN RVD 10/29/2007	
				DEC.	INCHES			CHK	VS 10/29/2007
02	UPDATED PER MT2 CONVERSION	ISAAC 10-0609	LST 2/5/10	.XX	±.03	TITLE	OUTLINE - 180TCFZ FRAME TENV - "C" FACE	APPD	LST 10/29/2007
A	CHANGED TO 022737.11 BOX AND 022738.01 COVER	JWM 3/25/08		.XXX	±.005			SCALE	3=8
	PER ECO 08-1032			.XXXX	±.0005			REF	OLSPR070310
NO. REVISION				CHK	ANG	±1/2"	FINISH	CUSTOM ELEVATOR	PREV
THIS DRAWING IN DESIGN AND DETAIL IS OUR PROPERTY AND MUST NOT BE USED EXCEPT IN CONNECTION WITH OUR WORK. ALL RIGHTS OF DESIGN AND INVENTION ARE RESERVED. THIS IS AN ELECTRONICALLY GENERATED DOCUMENT - DO NOT SCALE THIS PRINT				RFP			CAD FILE	OL132164	SIZE
				DIST	NLV				DRAWING NO.
								B	OL132164
									REV.
									02

005102-01


VIEW FROM OUTSIDE OF MOTOR AT SWITCH END.



LINE LEADS

CONNECT LEADS AS FOLLOWS  
FOR FOUR CONDUCTOR CORD ( )

CORD	L1 (RED)	L2 (WHITE)	L3 (BLACK)	(GREEN)
MOTOR	T1	T2	T3	GROUND

				TOLERANCES UNLESS SPECIFIED		 <b>Regal Beloit America, Inc.</b>	DRAWN JRW 9/11/75		
				DEC.	INCHES		CHK		
				.X	±.1		APPD JCW 9/11/75		
08	UPDATED TO REGAL LOGO	SAJ 06/26/15	AJY	.XX	±.01	TITLE EXTERNAL WIRING DIAGRAM TYPE "T" W/O PROTECTOR	SCALE 1=1		
07	UPDATED TO CURRENT STANDARDS	DBT 5/30/97		.XXX	±.005		REF W-T6343-6		
06	REDRAWN ON CAD; ADDED DECAL NUMBER	SAW 1/24/95		.XXXX	±.0005	MAT'L. DECAL - 004169	FMF 6T17FB7		
NO.	REVISION	BY & DATE	CHK	ANG	±1/2"	FINISH	PREV		
THIS DRAWING IN DESIGN AND DETAIL IS OUR PROPERTY AND MUST NOT BE USED EXCEPT IN CONNECTION WITH OUR WORK ALL RIGHTS OF DESIGN AND INVENTION ARE RESERVED THIS IS AN ELECTRONICALLY GENERATED DOCUMENT - DO NOT SCALE THIS PRINT				RFP 5/1/02		CAD FILE 00510201	SIZE A	DRAWING NO. 005102-01	REV. 08
				DIST BRF-NLV					