

PRODUCT INFORMATION PACKET



Model No: 132262.00

Catalog No: 132262.00

..5HP..1755RPM.184T.DP.575V.3PH.60HZ.CONT.40C.1.15SF.RIGID.C184T17DB80A.....

Miscellaneous

Regal and Leeson are trademarks of Regal Rexnord Corporation or one of its affiliated companies.

©2021 Regal Rexnord Corporation, All Rights Reserved. MC017097E





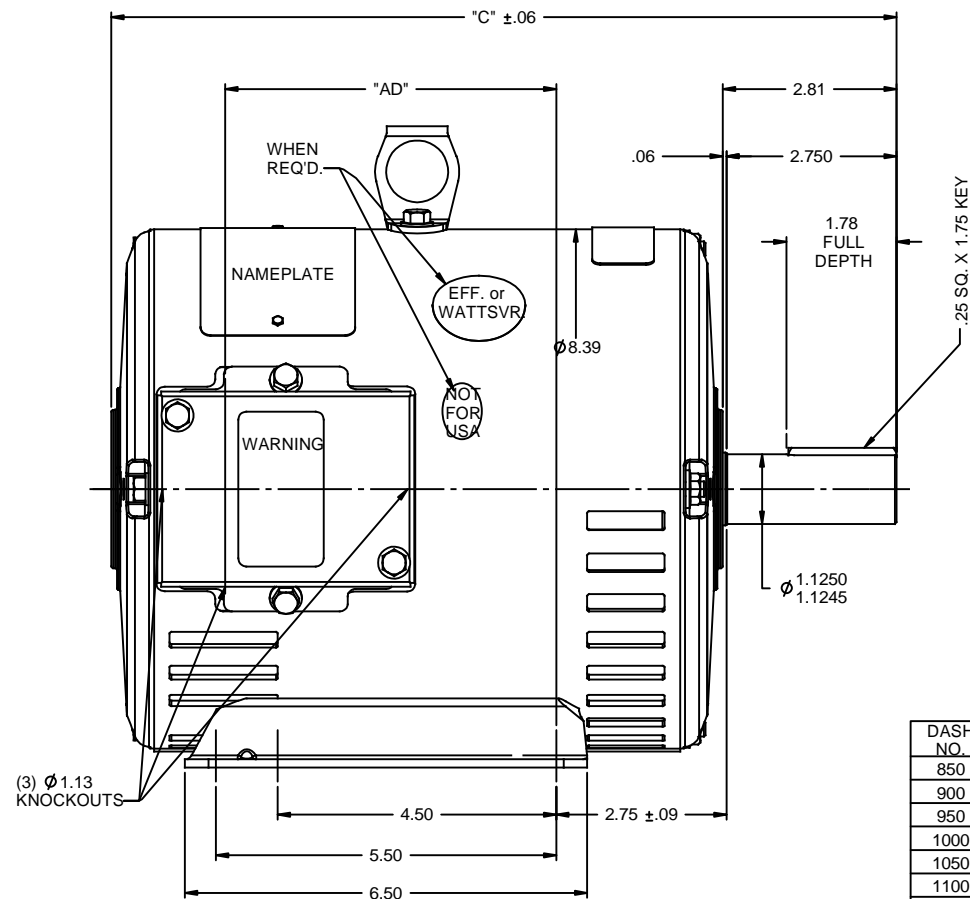
Nameplate Specifications

Output HP	5 Hp	Output KW	3.7 kW
Frequency	60 Hz	Voltage	575 V
Current	5.0 A	Speed	1755 rpm
Service Factor	1.15	Phase	3
Efficiency	89.5 %	Power Factor	83
Duty	Continuous	Insulation Class	F
Design Code	B	KVA Code	J
Frame	184T	Enclosure	Drip Proof
Thermal Protection	No	Ambient Temperature	40 °C
Drive End Bearing Size	6206	Opp Drive End Bearing Size	6205
UL	Recognized	CSA	Y
CE	Y	IP Code	22
Number of Speeds	1		

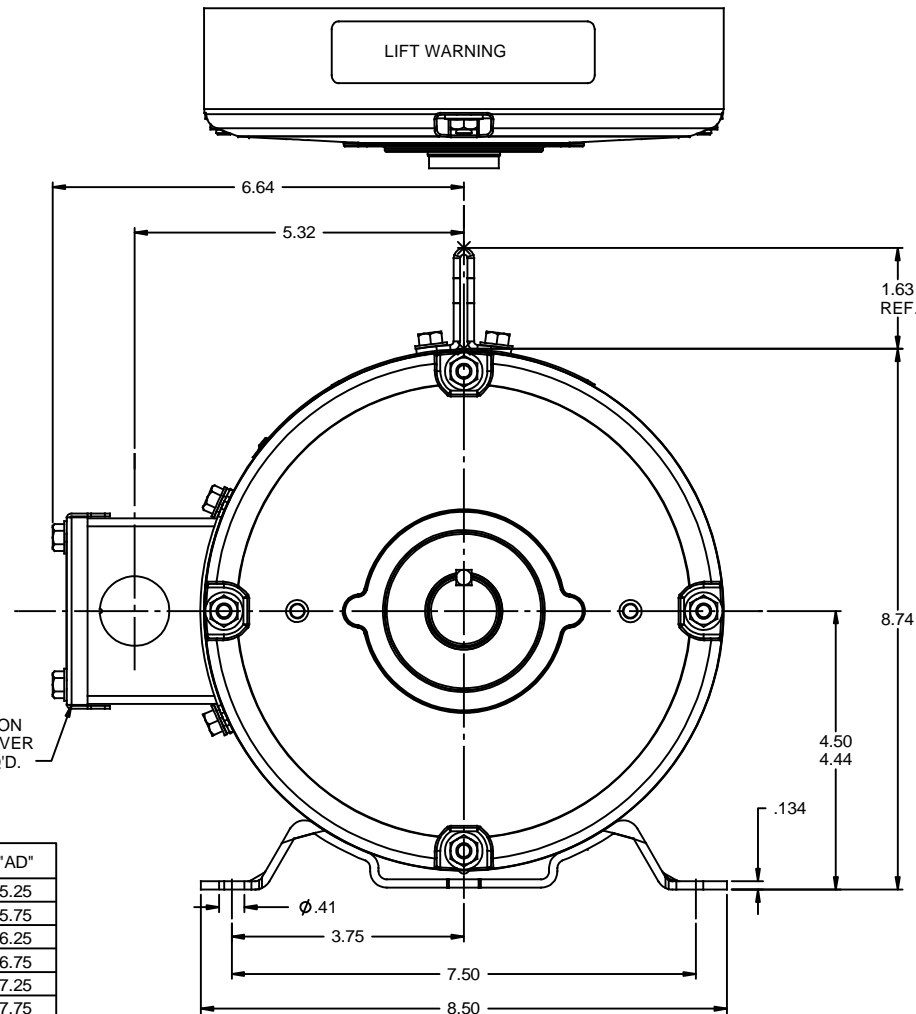
Technical Specifications


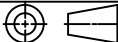
Electrical Type	Squirrel Cage Induction Run	Starting Method	Across The Line
Poles	4	Rotation	Reversible
Resistance Main	0 Ohms	Mounting	Rigid Base
Motor Orientation	Horizontal	Drive End Bearing	Ball
Opp Drive End Bearing	Ball	Frame Material	Rolled Steel
Shaft Type	T	Assembly/Box Mounting	F1 ONLY
Connection Drawing	005102.01	Outline Drawing	035464-1000

This is an uncontrolled document once printed or downloaded and is subject to change without notice. Date Created:10/26/2021

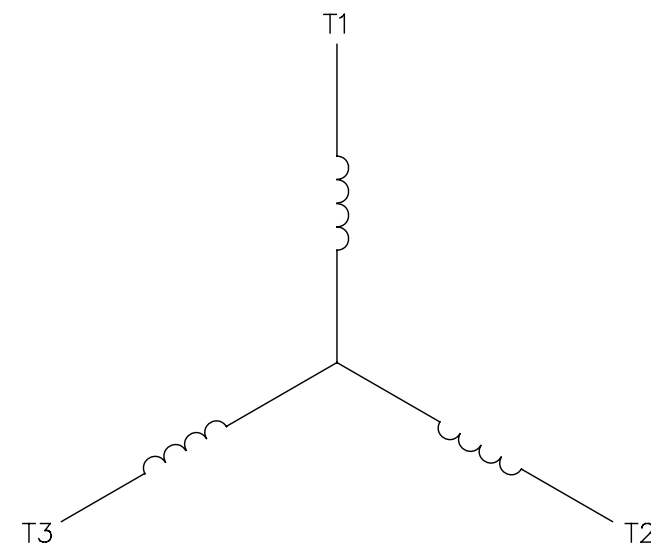
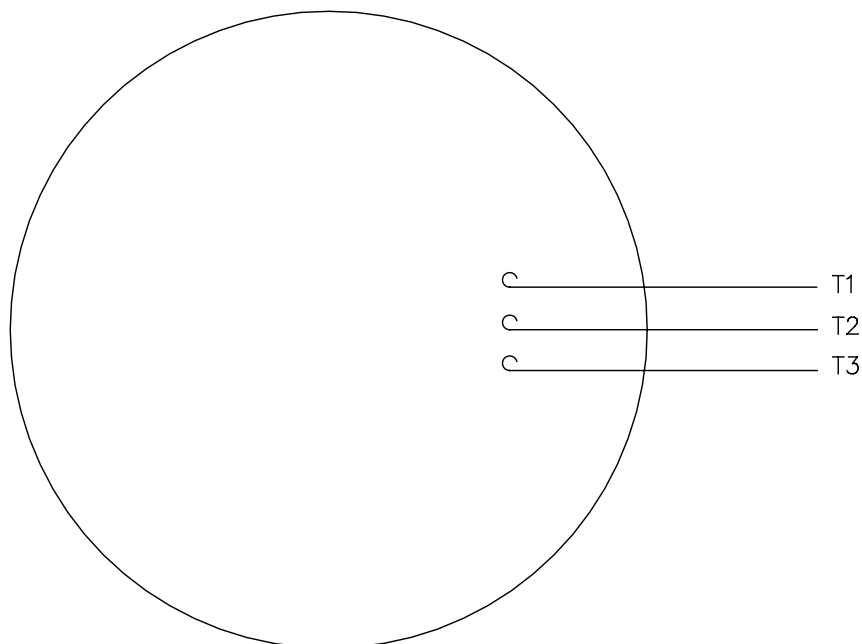


DASH NO.	"C"	"AD"
850	12.69	5.25
900	13.19	5.75
950	13.69	6.25
1000	14.19	6.75
1050	14.69	7.25
1100	15.19	7.75
1150	15.69	8.25
1200	16.19	8.75




		TOLERANCES UNLESS SPECIFIED		DRAWN MGM 2/21/03
		DEC INCHES		
		X $\pm .1$	TITLE OUTLINE - 180T FRAME DRIP PROOF - RIGID	CHK
		XX $\pm .03$		APPR RDW 2/21/03
		XXX $\pm .005$	MATL GENERAL PURPOSE	SCALE 1:2
		XX XXXX $\pm .0005$		REF 035455
- UPDATED & REDRAWN IN SOLIDWORKS		LST 12/23/2009		FMF
NO REVISION		BY & DATE	CHK ANG $\pm 1/2^\circ$	PAGE OF
THIRD ANGLE PROJECTION 		RFP	FINISH PREV	SIZE DRAWING NO
		NETWORK FILE NAME		B 035464
				REV -

LINE LEADS



CONNECT LEADS AS FOLLOWS
FOR FOUR CONDUCTOR CORD ()

CORD	L1 (RED)	L2 (WHITE)	L3 (BLACK)	(GREEN)
MOTOR	T1	T2	T3	GROUND

				TOLERANCES UNLESS SPECIFIED		 Regal Beloit America, Inc.			DRAWN	JRW 9/11/75	
				DEC.	INCHES				CHK		
				.X	±.1				APPD	JCW 9/11/75	
08	UPDATED TO REGAL LOGO	SAJ 06/26/15	AJY	.XX	±.01	TITLE EXTERNAL WIRING DIAGRAM TYPE "T" W/O PROTECTOR			SCALE	1=1	
07	UPDATED TO CURRENT STANDARDS	DBT 5/30/97		.XXX	±.005				REF	W-T6343-6	
06	REDRAWN ON CAD; ADDED DECAL NUMBER	SAW 1/24/95		.XXXX	±.0005	MAT'L. DECAL - 004169			FMF	6T17FB7	
NO.	REVISION	BY & DATE	CHK	ANG	±1/2"	FINISH			PREV		
THIS DRAWING IN DESIGN AND DETAIL IS OUR PROPERTY AND MUST NOT BE USED EXCEPT IN CONNECTION WITH OUR WORK ALL RIGHTS OF DESIGN AND INVENTION ARE RESERVED THIS IS AN ELECTRONICALLY GENERATED DOCUMENT - DO NOT SCALE THIS PRINT				RFP 5/1/02		CAD FILE 00510201		SIZE	DRAWING NO.		REV
				DIST BRF-NLV				A	005102-01		08