

PRODUCT INFORMATION PACKET



Model No: 850794.00

Catalog No: 850794.00

Hydraulic Motor, 30 & 25 HP, 3 Ph, 60 & 50 Hz, 230/460 & 190-208/380-415 V, 3600 & 3000 RPM,
286TZ Frame, TEFC



Regal and Leeson are trademarks of Regal Rexnord Corporation or one of its affiliated companies.

©2023 Regal Rexnord Corporation, All Rights Reserved. MC017097E



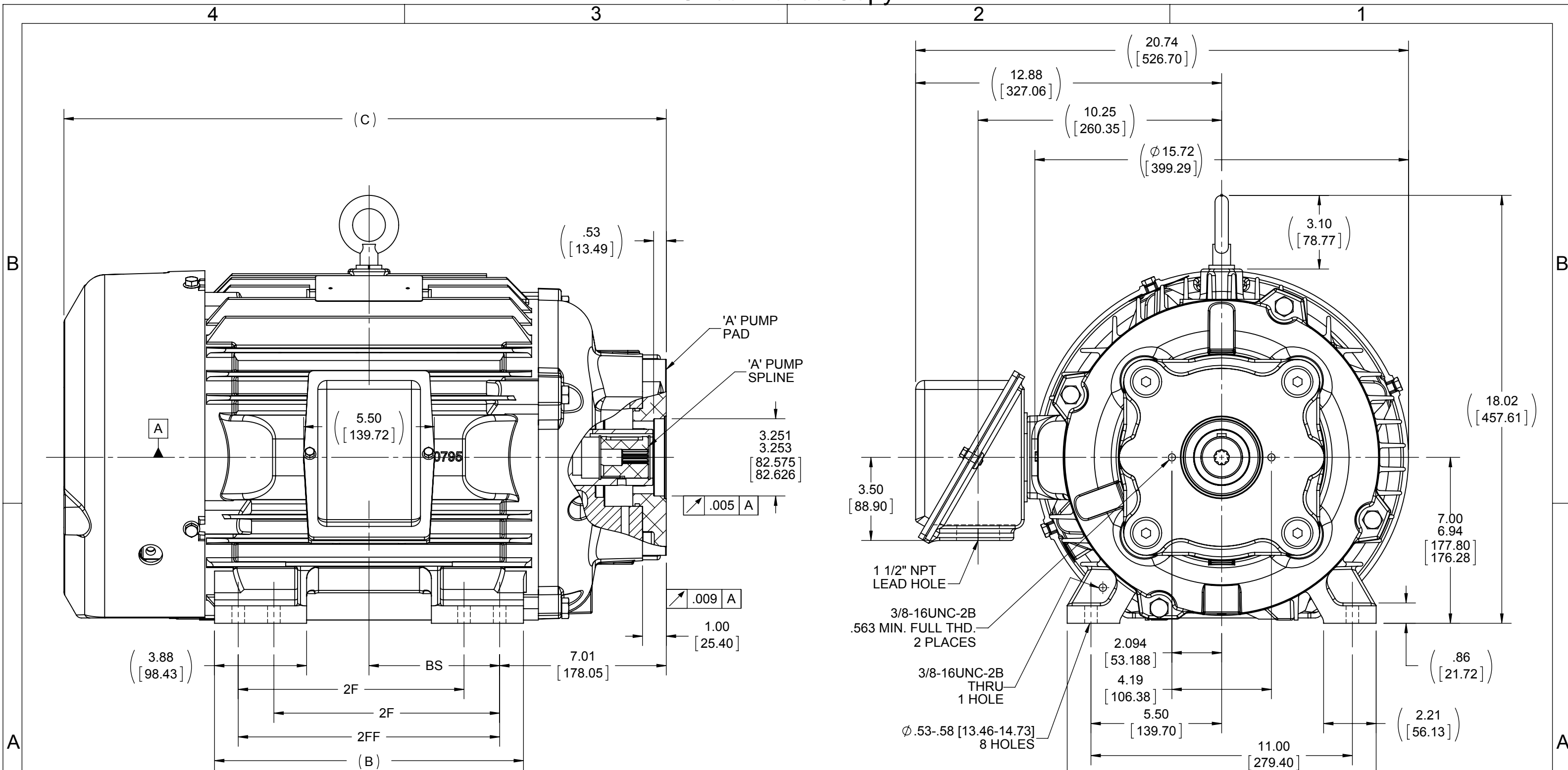


Nameplate Specifications

Phase	3	Output HP	30 & 25 Hp
Output KW	22.4 & 18.7 kW	Voltage	230/460 & 190-208/380-415 V
Speed	3555 & 2952 rpm	Service Factor	1.15 & 1.0
Frame	286TZ	Enclosure	Totally Enclosed Fan Cooled
Thermal Protection	No Protection	Efficiency	93 & 92.4 %
Ambient Temperature	40 °C	Frequency	60 & 50 Hz
Current	67/33.5 & 68-64/34-32 A	Power Factor	89.5
Duty	Continuous	Insulation Class	F
Design Code	B	KVA Code	G
Drive End Bearing Size	6312	Opp Drive End Bearing Size	6210
UL	Recognized	CSA	Y
CE	Y	IP Code	55
Number of Speeds	1		

Technical Specifications

Electrical Type	Squirrel Cage Inverter Rated	Starting Method	Line Or Inverter
Poles	2	Rotation	Reversible
Resistance Main	.3 Ohms	Mounting	Rigid Base
Motor Orientation	Horizontal	Drive End Bearing	Ball
Opp Drive End Bearing	Ball	Frame Material	Cast Iron
Shaft Type	Single Special Extension	Overall Length	25.35 in
Frame Length	14.25 in	Shaft Diameter	1.875 in
Shaft Extension	SAE SPLINE SHAFT in	Assembly/Box Mounting	F1/F2 CAPABLE
Outline Drawing	B-SS312594-1425	Connection Drawing	A-EE7308-LE


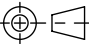


(HYDRAULIC - 'A' PUMP PAD)

DASH	FRAME	B	C	2F	2FF	BS
1275	284TYZ	11.50 [292.10]	23.85 [605.66]	---	9.50 [241.30]	4.75 [120.65]
1425	284/286TYZ	13.00 [330.20]	25.35 [643.76]	9.50 [241.30]	11.00 [279.40]	5.50 [139.70]

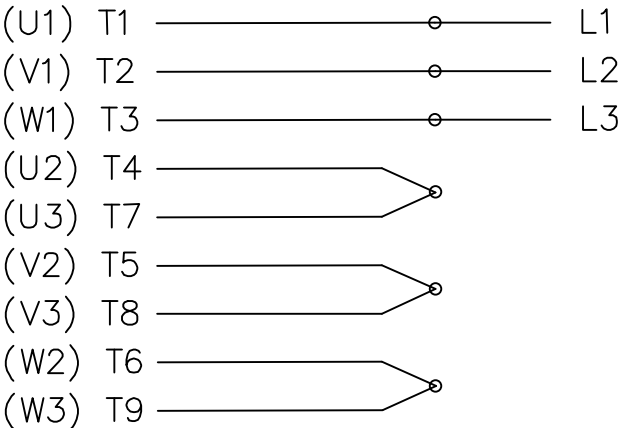
DRAWING REVISION	REVISION BY	DATE
B	MSG	10-07-2014
ECO	APPROVED BY	DATE
ECO-0060201	TB	10-09-2014
ECO DESCRIPTION		
REVISED TITLE BLOCK DESCRIPTION		
COPYRIGHT REGAL BELOIT AMERICA, INC. ALL RIGHTS RESERVED. PROPRIETARY AND CONFIDENTIAL INFORMATION - THIS DOCUMENT IS THE PROPERTY OF REGAL BELOIT AMERICA, INC. ("OWNER") AND CONTAINS OWNER'S PROPRIETARY INFORMATION. ANY PERSON, CORPORATION OR OTHER FIRM RECEIVING IT IS DEEMED, BY RECEIVING IT, TO AGREE THAT IT, AND/OR ANY PART OF IT, SHALL NOT BE DISCLOSED TO ANY PERSON, CORPORATION OR OTHER ENTITY, DUPLICATED, AND/OR USED, EXCEPT AS EXPRESSLY APPROVED IN WRITING IN ADVANCE BY OWNER. THIS DOCUMENT SHALL BE RETURNED TO OWNER UPON REQUEST. IT MAY BE SUBJECT TO CERTAIN RESTRICTIONS UNDER APPLICABLE EXPORT CONTROL LAWS AND REGULATIONS.		

TOLERANCES UNLESS OTHERWISE SPECIFIED:			
DEC.	INCH	mm	ANGLE
.X	±0.1	[±2.5]	±7° 30"
.XX	±0.03	[±0.76]	
.XXX	±0.005	[±0.127]	
.XXXX	±0.0005	[±0.0127]	
REMOVE BURRS & BREAK SHARP EDGES: .003/.015 [0.076/.381]			
CORNER FILLETS: .02 [0.51]			
MACHINED SURFACES: 200 INCH 5.1 mm			
mm SHOWN IN [BRACKETS]			

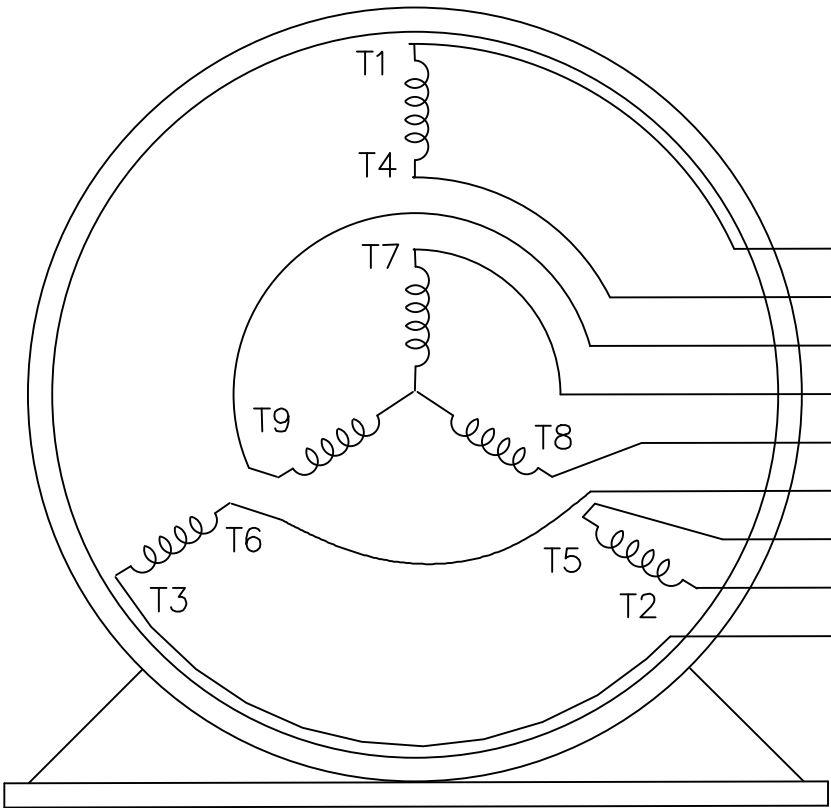
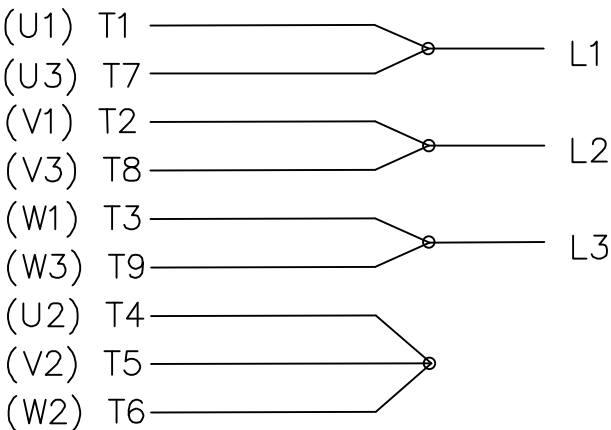
DRAWN BY	JHA	 Regal Beloit America, Inc.		
DATE	02-11-2014	<div>DESCRIPTION</div> <div>OUTLINE</div> <div>284/286TYZ FR. - TEFC - 12.50 LAM</div>		
APPROVED BY	TB			
DATE	02-12-2014			
REFERENCE				
		MATERIAL	PROCESS/FINISH	
THIRD ANGLE PROJECTION		SIZE	DRAWING NUMBER	
		B	SS312594	
			SHEET	
			1 OF 1	

THREE PHASE DUAL VOLTAGE MOTOR

HIGH VOLTAGE



LOW VOLTAGE




T1 (U1)
 T4 (U2)
 T9 (W3)
 T7 (U3)
 T8 (V3)
 T6 (W2)
 T5 (V2)
 T2 (V1)
 T3 (W1)

VIEW OF TERMINAL END

REF.
WINDING DIAGRAM

T8Y, T2Y, T2BL, T4BX, T2EC, T2G
 T6BZ, T2B, T6BL, T4AV, T6B, T4B

			TOLERANCES UNLESS SPECIFIED		 ELECTRIC MOTORS GEARMOTORS AND DRIVES	DRAWN HLB 04-29-2002		
			DEC.	INCHES		CHK	ML	05-03-2002
			.X	±.1		APPD	GK	05-03-2002
			.XX	±.01	TITLE CONNECTION DIAGRAM 3Ø - DUAL VOLTAGE MOTOR	SCALE 1=1		
2	ADDED IEC NOTATIONS... (U1), (V1) ETC. (MU105786)	REP 01-11-2012	DR	.XXX ±.005		REF		
1	NEW DRAWING	HLB 05-03-2002	ML	.XXXX ±.0005	MAT'L.	FMF		
NO.	REVISION	BY & DATE	CHK	ANG	FINISH	PREV		
THIS DRAWING IN DESIGN AND DETAIL IS OUR PROPERTY AND MUST NOT BE USED EXCEPT IN CONNECTION WITH OUR WORK ALL RIGHTS OF DESIGN AND INVENTION ARE RESERVED THIS IS AN ELECTRONICALLY GENERATED DOCUMENT - DO NOT SCALE THIS PRINT			RFP	CAD FILE EE7308-LE		SIZE	DRAWING NO.	PAGE OF
			DIST LB-WP			A	EE7308-LE	2

**1051 CHEYENNE AVE.
GRAFTON, WI 53024
PH. 262-377-8810**

CATALOG #: 850794.00

CONN. DIAGRAM: A-EE7308-LE

OUTLINE: B-SS312594-1425

MOUNTING: F1/F2 CAPABLE

WINDING #: K2862155 3

TYPICAL MOTOR PERFORMANCE DATA

HP	kW	SYNC. RPM	F.L. RPM	FRAME	ENCLOSURE	KVA CODE	DESIGN
30&25	22.4&18.7	3600	3555&2952	286TZ	TEFC	G	B

PH	Hz	VOLTS	AMPS	START TYPE	DUTY	INSL	S.F.	AMB°C
3	60/50	230/460&190-208/380-415	67/33.5&68-64/34-32	LINE OR INVERTER	CONTINUOUS	F3	1.15/1.0	40

FULL LOAD EFF:	93&92.4	3/4 LOAD EFF:	93.6	1/2 LOAD EFF:	93	GTD. EFF		ELEC. TYPE
FULL LOAD PF:	89.5&90	3/4 LOAD PF:	87	1/2 LOAD PF:	81	92.4		SQ CAGE INV RATED

F.L. TORQUE	LOCKED ROTOR AMPS	L.R. TORQUE	B.D. TORQUE	F.L. RISE°C
44.5 LB-FT	434 / 217	63 LB-FT 142 %	123 LB-FT 275 %	65

SOUND PRESSURE @ 3 FT.	SOUND POWER	ROTOR WK^2	MAX. WK^2	SAFE STALL TIME	STARTS / HOUR	APPROX. MOTOR WGT
72 dBA	82 dBA	2.7 LB-FT^2	35 LB-FT^2	20 SEC.	2	450 LBS.

***** SUPPLEMENTAL INFORMATION *****

DE BRACKET TYPE	ODE BRACKET TYPE	MOUNT TYPE	ORIENTATION	SEVERE DUTY	HAZARDOUS LOCATION	DRIP COVER	SCREENS	PAINT
HYD PUMP SAE MOUNT PAD	STANDARD	RIGID	HORIZONTAL	TRUE	NONE	FALSE	NONE	BLUE (EPOXY)

BEARINGS		GREASE	SHAFT TYPE	SPECIAL DE	SPECIAL ODE	SHAFT MATERIAL	FRAME MATERIAL
DE	ODE						
BALL	BALL	POLYREX EM	SGL SPL EXT	HYD PUMP ADAPTOR SHAFT	NONE	1045 HOT ROLLED (C-204)	CAST IRON
6312	6210						

THERMO-PROTECTORS				THERMISTORS	CONTROL	SPACE HEATERS
THERMOSTATS	PROTECTORS	WDG RTDs	BRG RTDs			
NONE	NOT	NONE	NONE	NONE	FALSE	NONE VOLTS

*

N

O

T

E

S

INVERTER TORQUE: CONSTANT 10:1

INV. HP SPEED RANGE: NONE

ENCODER: NONE

NONE NONE

NONE NONE PPR

BRAKE: NONE NONE

NONE P/N NONE

NONE NONE

NONE FT-LB NONE V NONE Hz

Data Sheet

Date: 1/22/2018

850794.00



Data @ 460 V

Motor Load Data

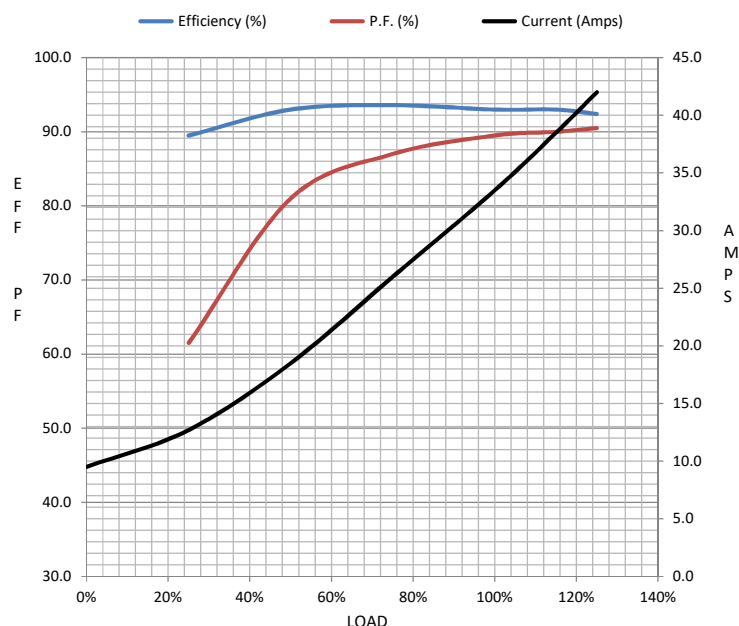
Load	0%	25%	50%	75%	100%	115%	125%	LR	
Current (Amps)	9.5	12.7	18.5	26.0	33.5	38.5	42.0	217	
Torque (ft-lb)	0.00	11.0	22.0	33.0	44.5	51.0	56.0	63.0	
RPM	3600	3590	3578	3565	3555	3,547	3542	0	
Efficiency (%)		89.5	93.0	93.6	93.0	93.0	92.4		
P.F. (%)	6.5	61.5	81.0	87.0	89.5	90.0	90.5	32.0	

Motor Speed Data

	LR	Pull-Up	BD	Rated	Idle
Speed (RPM)	0	1800	3400	3555	3600
Current (Amps)	217	195	138	33.5	9.5
Torque (ft-lb)	63.0	56.0	123	44.5	0.00

Information Block

HP	30.0			
Sync. RPM	3600			
Frame	286			
Enclosure	TEFC			
Construction	TFN			
Voltage	230/460#190-208/380-415 V			
Frequency	60 Hz			
Design	A			
LR Code letter	G			
Service Factor	1.15			
Temp Rise @ FL	65 °C			
Duty	CONT			
Ambient	40 °C			
Elevation	1,000 feet			
Rotor/Shaft wk²	2.70 Lb-Ft²			
Ref Wdg	K2862155 NONE			
Sound Pressure @ 1M	72 dBA			
VFD Rating	CONSTANT 10:1			
Outline Dwg	B-SS312594-1425			
Conn. Diag	A-EE7308-LE			
Additional Specifications:				
0				
0				
EQUIV CKT (OHMS / PHASE)				
R1	R2	X1	X2	Xm
0.1970	0.1040	0.7940	0.6050	#####



Speed - Torque Curve

