

# PRODUCT INFORMATION PACKET



Model No: K200M2  
Catalog No: K200M2

General Purpose Motor, 2 HP, 1 Ph, 60 Hz, 115/230 V, 1800 RPM, 182TZ Frame, TEFC



Regal and Century are trademarks of Regal Rexnord Corporation or one of its affiliated companies.  
©2022 Regal Rexnord Corporation, All Rights Reserved. MC017097E





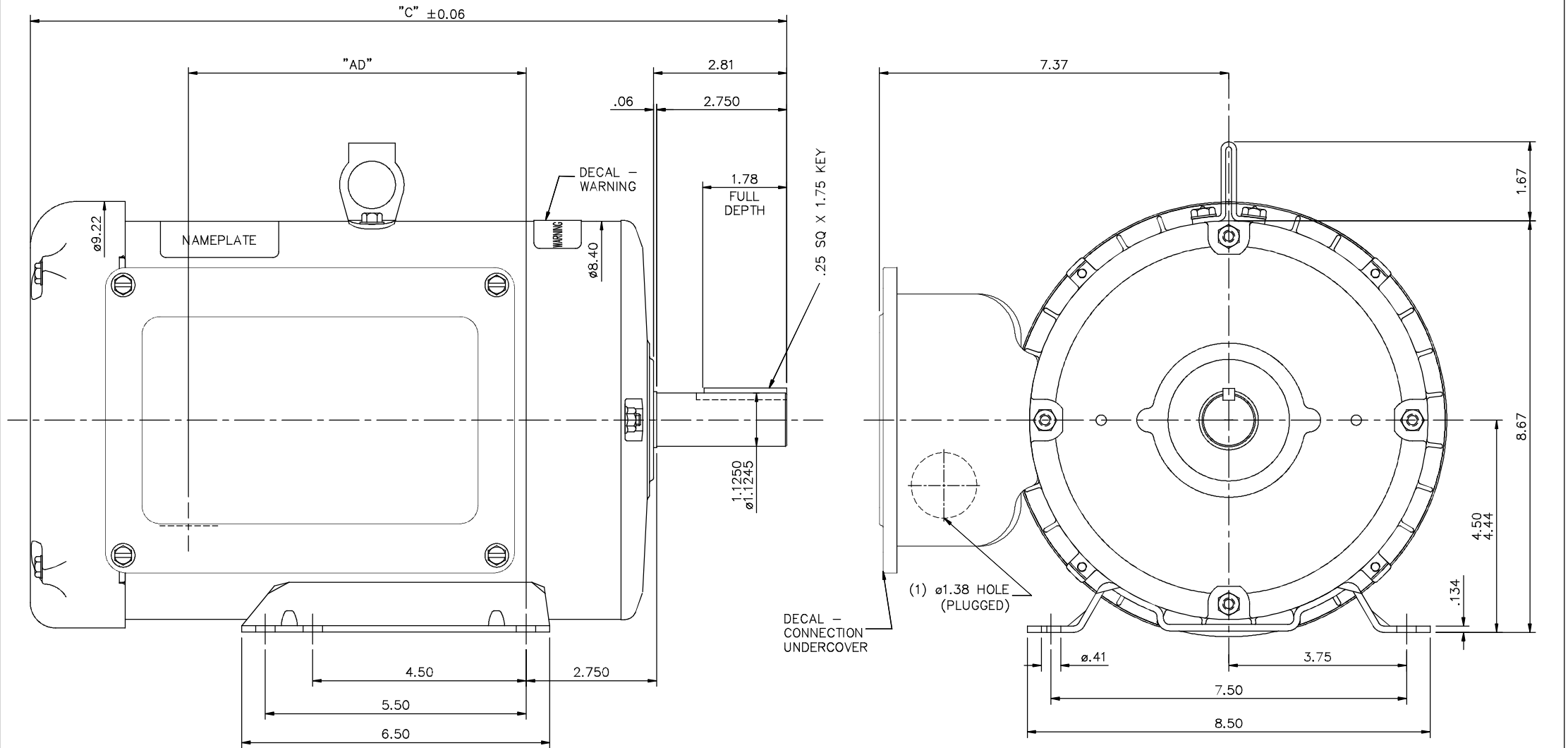
### Nameplate Specifications

Output HP	2 Hp	Output KW	1.5 kW
Frequency	60 Hz	Voltage	115/230 V
Current	24/12 A	Speed	1760 rpm
Service Factor	1.15	Phase	1
Duty	Continuous	Insulation Class	F
Frame	182TZ	Enclosure	Totally Enclosed Fan Cooled
Thermal Protection	No Protection	Ambient Temperature	40 °C
UL	Recognized	CSA	Y
CE	Y	Number of Speeds	1

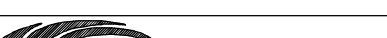
### Technical Specifications

Electrical Type	Capacitor Start Induction Run	Starting Method	Across The Line
Poles	4	Rotation	Counterclockwise
Mounting	Rigid Base	Drive End Bearing	Ball
Opp Drive End Bearing	Ball	Frame Material	Rolled Steel
Shaft Type	Keyed	Overall Length	14.46 in
Frame Length	9.00 in	Shaft Diameter	1.125 in
Shaft Extension	2.81 in		
Outline Drawing	035632CY	Connection Drawing	005062.11CY

This is an uncontrolled document once printed or downloaded and is subject to change without notice. Date Created:11/28/2022



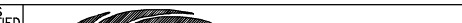
GASKETS THROUGHOUT

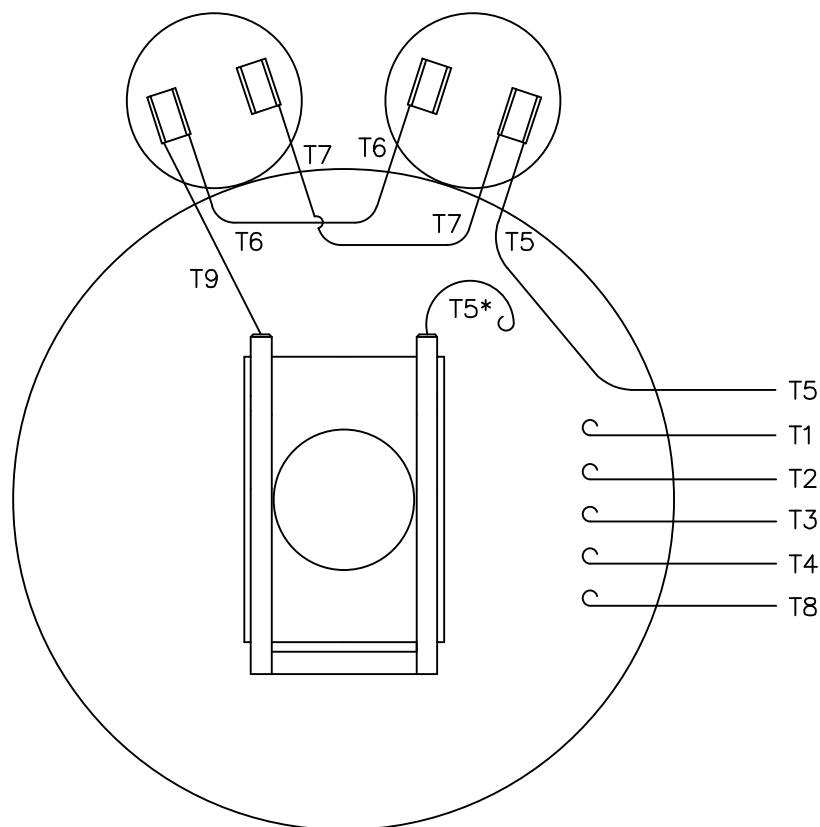
MAXIMUM FACE RUNOUT TO BE .004 T.I.R. MAXIMUM PILOT ECCENTRICITY TO BE .004 T.I.R. PERMISSIBLE SHAFT RUNOUT TO BE .004 T.I.R.	DASH NO.	"C"	"AD"					TOLERANCES UNLESS SPECIFIED		DRAWN GR 08/22/12				
	900	14.46	5.62					DEC. INCHES		CHK VS 08/23/12				
	950	14.96	6.12				.X	±0		APPD				
	1000	15.46	6.62				.XX	±0		SCALE				
	1050	15.96	7.12				.XXX	±0		REF 035632				
	1100	16.46	7.62	01	UPDATED DASH # TABLE	VS 10/9/2012	.XXXX	±0		MAT'L	FMF			
	1150	16.96	8.12	No.	REVISION	BY & DATE	CHK	ANG ±0	FINISH	PREV				
	1200	17.46	8.62	THIS DRAWING IN DESIGN AND DETAIL IS OUR PROPERTY AND MUST NOT BE USED EXCEPT IN CONNECTION WITH OUR WORK ALL RIGHTS OF DESIGN AND INVENTION ARE RESERVED THIS IS AN ELECTRONICALLY GENERATED DOCUMENT - DO NOT SCALE THIS PRINT							RFP DIST	CAD FILE 035632CY	SIZE B	DRAWING NO. 035632CY

MAXIMUM FACE RUNOUT TO BE .004 T.I.R.

MAXIMUM PILOT ECCENTRICITY TO BE .004 T.I.R.

PERMISSIBLE SHAFT RUNOUT TO BE .004 T.I.R.

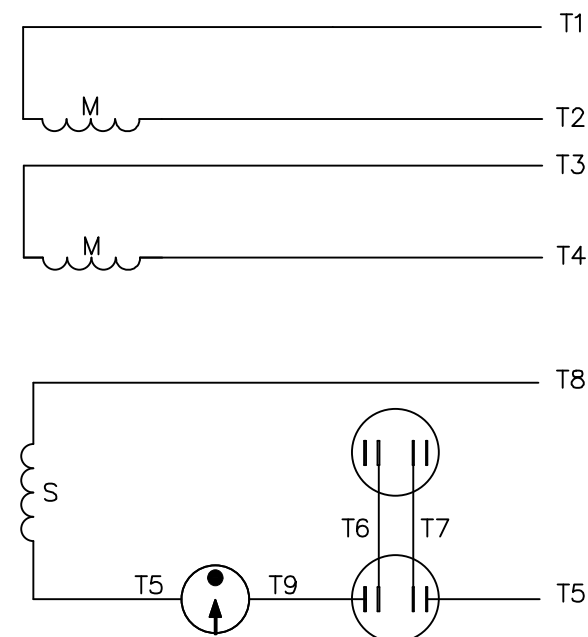
NO.	C	AD					TOLERANCES UNLESS SPECIFIED		DRAWN GR 08/22/12		
900	14.46	5.62				DEC. INCHES	CHK VS 08/23/12				
950	14.96	6.12			.X ±0	TITLE OUTLINE – 180T TEFC–RIGID	APPD				
1000	15.46	6.62			.XX ±0		SCALE				
1050	15.96	7.12			.XXX ±0		REF 035632				
1100	16.46	7.62	01	UPDATED DASH # TABLE	VS 10/9/2012		MAT'L		FMF		
1150	16.96	8.12	No.	REVISION	BY & DATE	CHK ANG ±0	FINISH	PREV			
1200	17.46	8.62	THIS DRAWING IN DESIGN AND DETAIL IS OUR PROPERTY AND MUST NOT BE USED EXCEPT IN CONNECTION WITH OUR WORK ALL RIGHTS OF DESIGN AND INVENTION ARE RESERVED THIS IS AN ELECTRONICALLY GENERATED DOCUMENT – DO NOT SCALE THIS PRINT					RFP CAD FILE 035632CY	SIZE B	DRAWING NO. 035632CY	REV. 01
						DIST					



VIEW FROM OUTSIDE OF MOTOR AT SWITCH END.

\* THIS LEAD MAY BE WHITE

## LINE LEADS



\*NOTE: OPPOSITE ROTATION WHEN VIEWED FROM LEAD END

	ROTATION FACING SHAFT END*	L1	L2	JOIN
HIGH VOLT	C.W.	T1	T4 T5	T2,T3 T8
	C.C.W.	T1	T4 T8	T2,T3 T5
LOW VOLT	C.W.	T1,T3 T8	T2,T4 T5	-----
	C.C.W.	T1,T3 T5	T2,T4 T8	-----

NO.	REVISION	BY & DATE	CHK	ANG	TOLERANCES UNLESS SPECIFIED		FINISH
					DEC.	INCHES	
					.X	±.1	
					.XX	±.01	
					.XXX	±.005	
					.XXXX	±.0005	
						±1/2"	



TITLE  
EXT. WIRING DIAGRAM  
TYPE "C" W/O PROTECTOR

MAT'L. DECAL - 081182

DRAWN GR 08/22/12

CHK VS 08/23/12

APPD

SCALE 1=1

REF 005062-11WD

FMF

PREV

THIS DRAWING IN DESIGN AND DETAIL IS OUR PROPERTY AND MUST NOT BE USED EXCEPT  
IN CONNECTION WITH OUR WORK ALL RIGHTS OF DESIGN AND INVENTION ARE RESERVED  
THIS IS AN ELECTRONICALLY GENERATED DOCUMENT - DO NOT SCALE THIS PRINT

RFP  
DIST

CAD FILE 00506211CY

SIZE  
A

DRAWING NO.

005062-11CY

REV.