

# PRODUCT INFORMATION PACKET



Model No: K315M2  
Catalog No: K315M2  
10 HP, Single Phase TEFC Motors, 1 phase, 3600 RPM, 230 V, F215T Frame, TEFC  
General Purpose Motors



Regal and Century are trademarks of Regal Rexnord Corporation or one of its affiliated companies.  
©2021 Regal Rexnord Corporation, All Rights Reserved. MC017097E





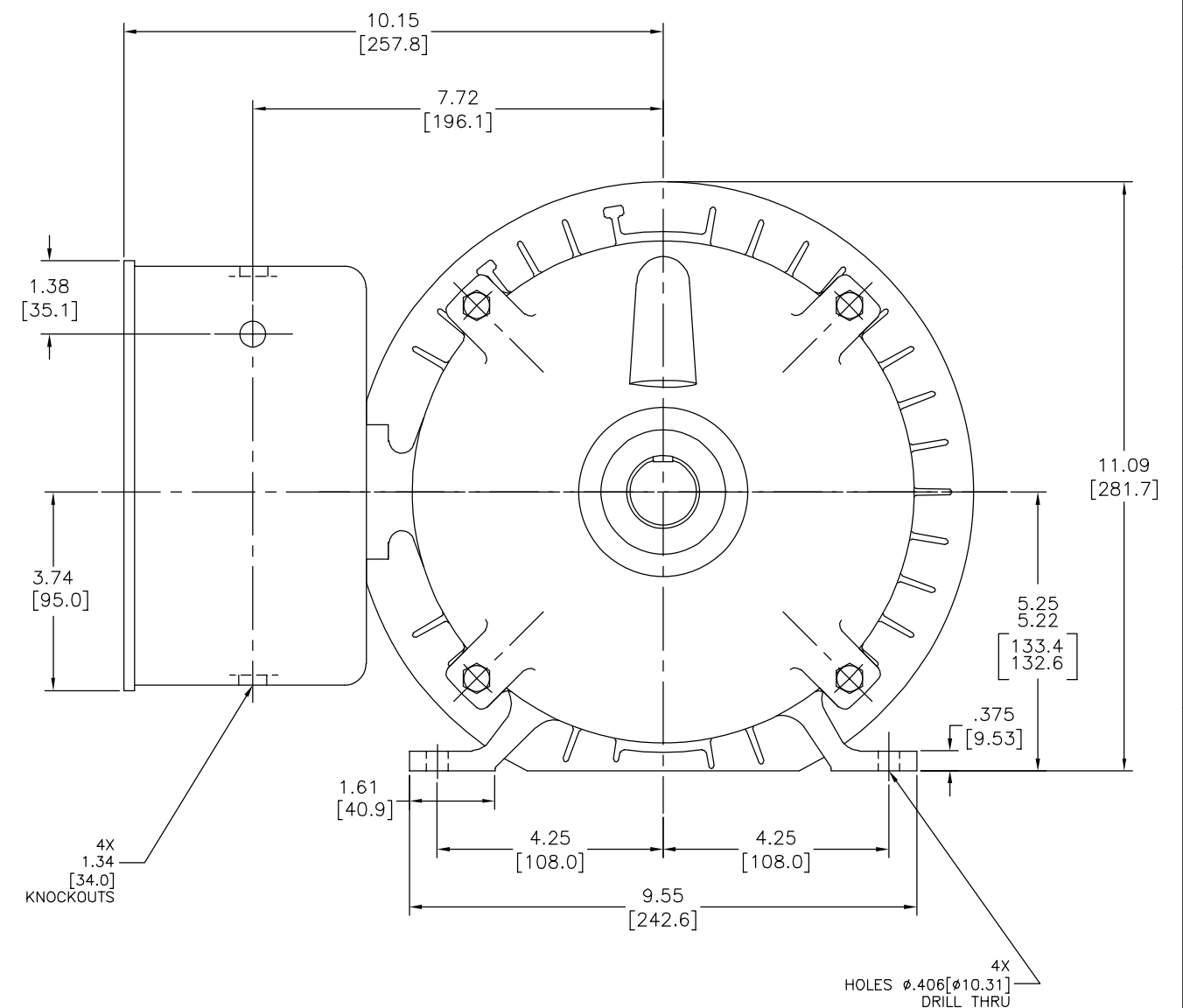
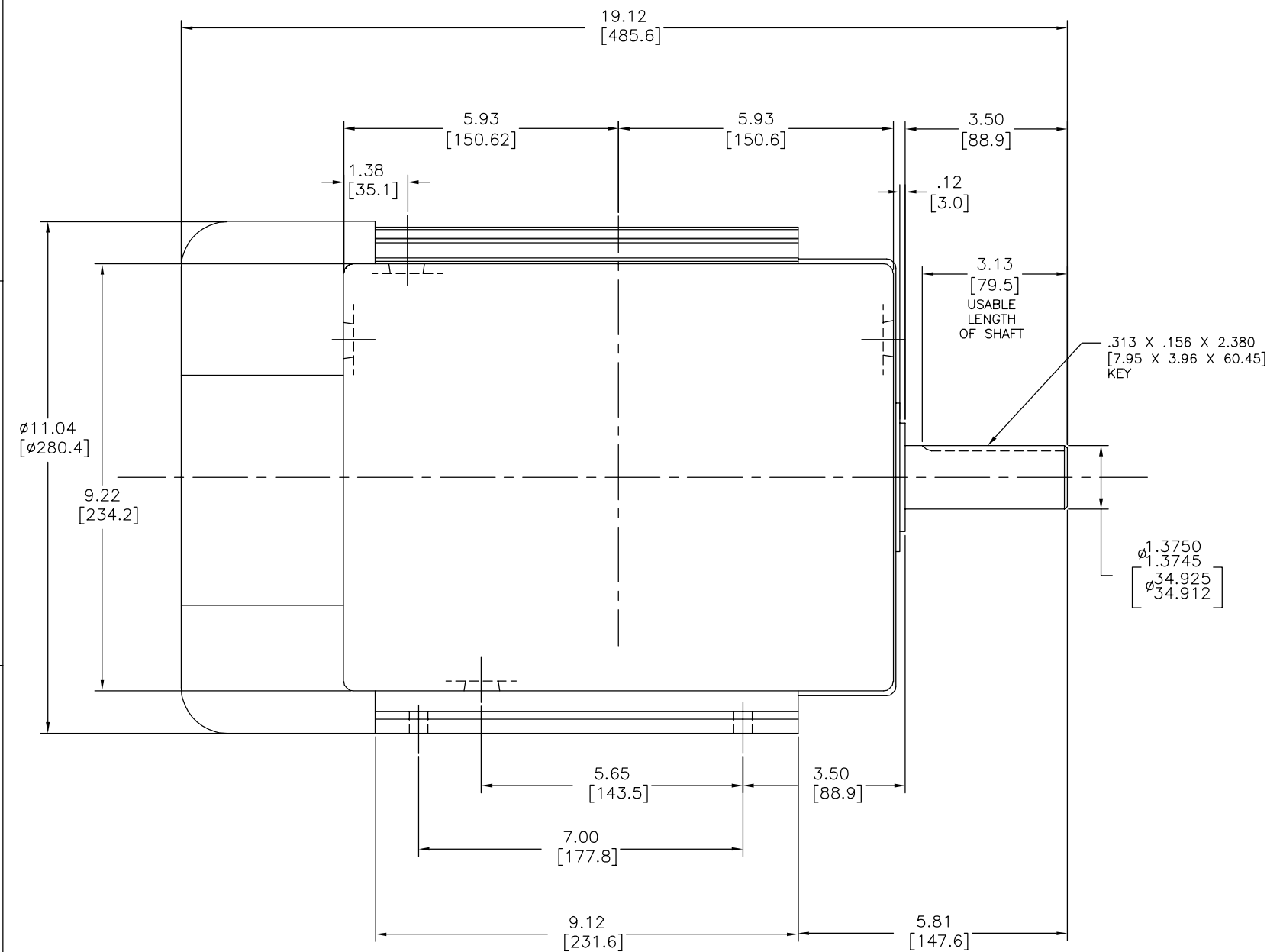
### Nameplate Specifications



Output HP	10.0 Hp	Output KW	7.5 kW
Frequency	60 Hz	Voltage	230 V
Current	40.0 A	Speed	3500 rpm
Service Factor	1	Phase	1
Duty	Continuous	Insulation Class	B
Frame	F215T	Enclosure	Totally Enclosed Fan Cooled
Thermal Protection	None	Ambient Temperature	40 °C
UL	Recognized	CSA	Y
CE	N	Number of Speeds	1

### Technical Specifications

Electrical Type	Capacitor Start, Capacitor Run, Single Or Dual Voltage	Starting Method	Across The Line
Poles	2	Rotation	Reversible
Mounting	Rigid Base	Drive End Bearing	Ball
Opp Drive End Bearing	Ball	Frame Material	Rolled Steel
Shaft Type	Keyed	Overall Length	19.12 in
Frame Length	9.00 in	Shaft Diameter	1.375 in
Shaft Extension	3.5 in		
Connection Drawing	35157401	Outline Drawing	K315M2-S01

This is an uncontrolled document once printed or downloaded and is subject to change without notice. Date Created:10/12/2021



GEOMETRIC CHARACTERISTICS & SYMBOLS 1 FLATNESS 2 STRAIGHTNESS 3 ANGULARITY 4 PERPENDICULARITY (SQUARENESS) 5 PARALLELISM 6 ROUNDNESS (CIRCULARITY) 7 CIRCULARITY 8 PROFILE OF ANY SURFACE 9 PROFILE OF ANY LINE 10 RUNOUT 11 TRUE POSITION 12 CHIRALITY 13 SYMMETRY	UNLESS OTHERWISE SPECIFIED DIM. TOLERANCES ARE AS FOLLOWS: FRACTIONS DECIMALS ANG. $\pm 0.02$ $\pm 0.005$ $\pm 0.0005$ mm $\pm 0.5$ $\pm 0.13$ $\pm 0.013$ ANG. $\pm 50$ DEG REMOVE BURRS & BREAK SHARP EDGES: INCH .003 $\pm$ .5 mm 0.1-0.4 CORNER FILLETS TO: INCH .020 mm 0.5 MACHINE SURFACES: INCH 125 mm 3.2 METRIC DIMS. SHOWN IN [BRACKETS]	DR BY: I. LOPEZ APPD: D. JAMORA THIRD ANGLE PROJECTION 	01-31-2013 01-31-2013 EDS DATE 11-11-2011 FORMAT REV H	<div style="display: flex; justify-content: space-between; align-items: center;"> <div style="text-align: center;">  <b>REGAL-BELOIT CORPORATION</b> </div> <div style="text-align: center;"> <p>DESCRIPTION</p> <p>MODEL-IHP OUTLINE</p> </div> </div> <div style="display: flex; justify-content: space-between; align-items: center;"> <div style="text-align: center;"> <p>SIZE</p> <p>D</p> </div> <div style="text-align: center;"> <p>DWG NO</p> <p>K315M2</p> </div> </div> <div style="display: flex; justify-content: space-between; align-items: center;"> <div style="text-align: center;"> <p>SCALE</p> <p>NONE</p> </div> <div style="text-align: center;"> <p>SHEET</p> <p>1</p> </div> </div>
--	--	--	---	--

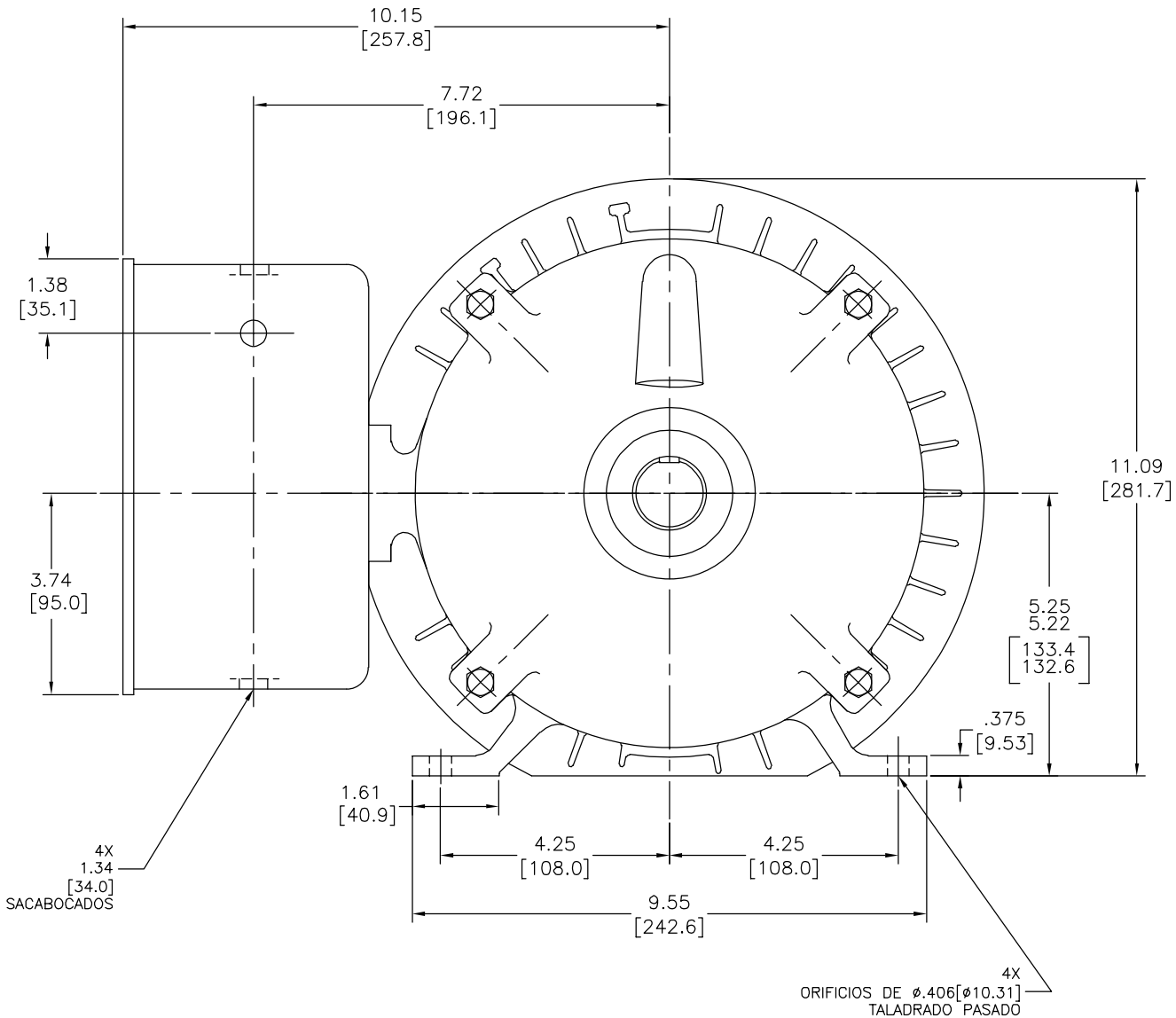
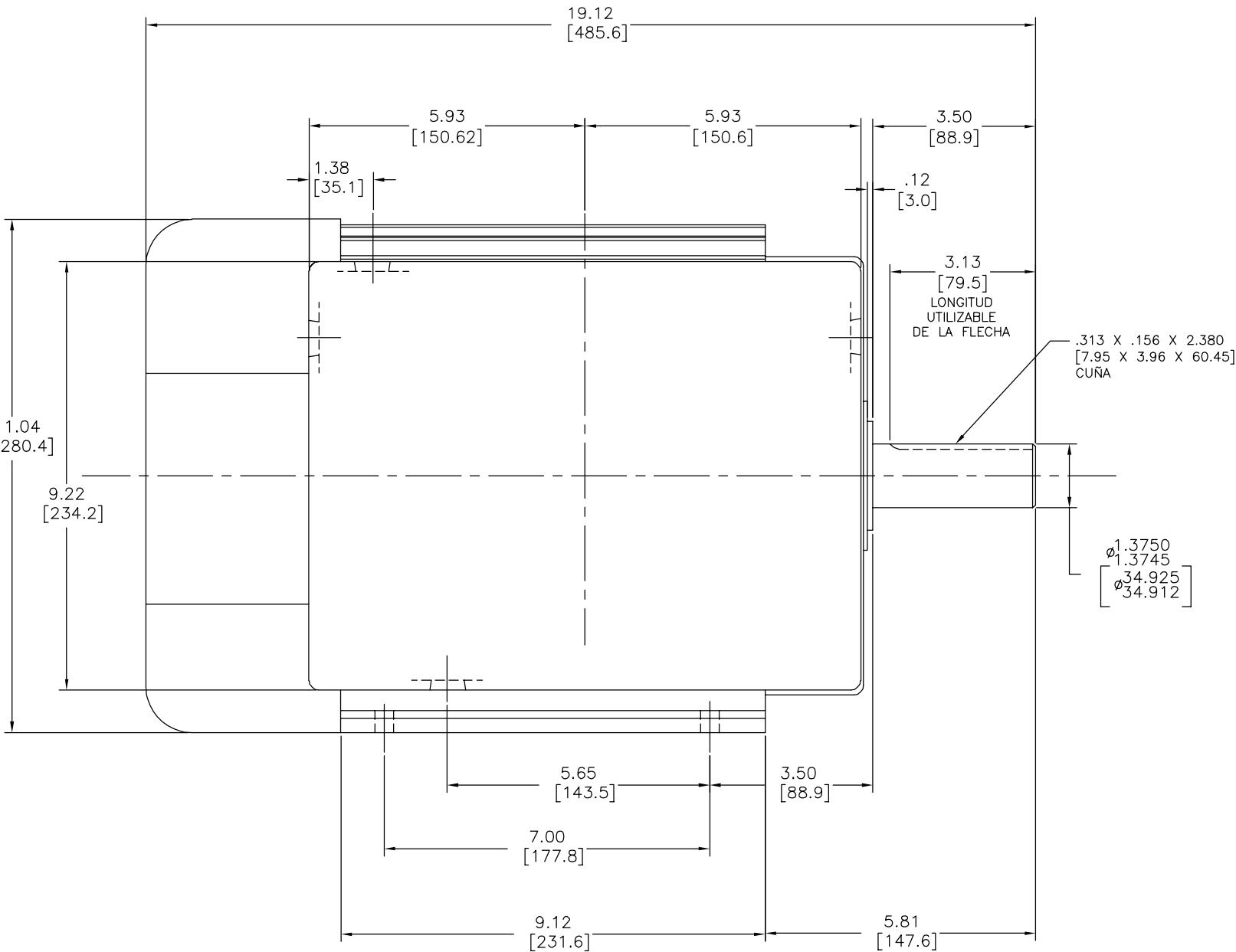
REVISION:	ECO	REVISADO POR:	I.LOPEZ	FECHA:	01-31-2013	APROBADO POR:	H.SANCHEZ	FECHA:	01-31-2013
A	0030686								

D

C

B

A



CARACTERÍSTICAS DE GEOMETRIA Y SIMBOLOS		A MENOS QUE SE ESPECIFIQUE DE OTRA MANERA, LAS TOLERANCIAS DE LAS DIMS, SON LAS SIGUIENTES:		DIBUJADO POR: I.LOPEZ		01-31-2013		REGAL REGAL-BELOIT CORPORATION	
— RECTITUD		PULG. ±.1 ±.02 ±.005 ±.0005		APROBADO POR: D.JAMORA		01-31-2013		DESCRIPCION: MODEL-IHP OUTLINE	
— ANGULARIDAD		mm ±0.5 ±0.13 ±0.013		TERCER ANGULO DE PROYECCION		FECHA EDS: 11-11-2011		TAMAÑO: D	
— PERPENDICULARIDAD (A ESCUADRA)		ELIMINAR REBASAS Y ORILLAS FILOSAS DEL BORDE.		CONFIDENCIAL: ESTE DIBUJO Y SU INFORMACION SON PROPIEDAD DE USO EXCLUSIVO Y CONFIDENCIAL DE REGAL-BELOIT CORPORATION. Y NO DEBERAN SER REVELADOS, DUPLICADOS, DISTRIBUIDOS O USARSE DE OTRA MANERA SIN EL CONSENTIMIENTO ESCRITO DE REGAL-BELOIT CORPORATION. -TODOS LOS DERECHOS RESERVADOS.		REV. FORMATO: H		NUMERO DE DIBUJO: K315M2	
— PARALELISMO		PULG. .003-.015 mm 0.1-0.4		FILETEAR ESQUINA: PULG. .020 mm 0.5		ESCALA: NONE		HOJA: 1	
— REDONDEZ (CIRCULARIDAD)		PULG. .125 mm 3.2		DIMS METRICAS MOSTRADAS [PARENTESIS]					
— CILINDRICIDAD									
— PERFIL DE CUALQUIER SUPERFICIE									
— PERFIL DE CUALQUIER LINEA									
— VARIACION									
— POSICION REAL									
— CONCENTRICIDAD									
— SIMETRIA									