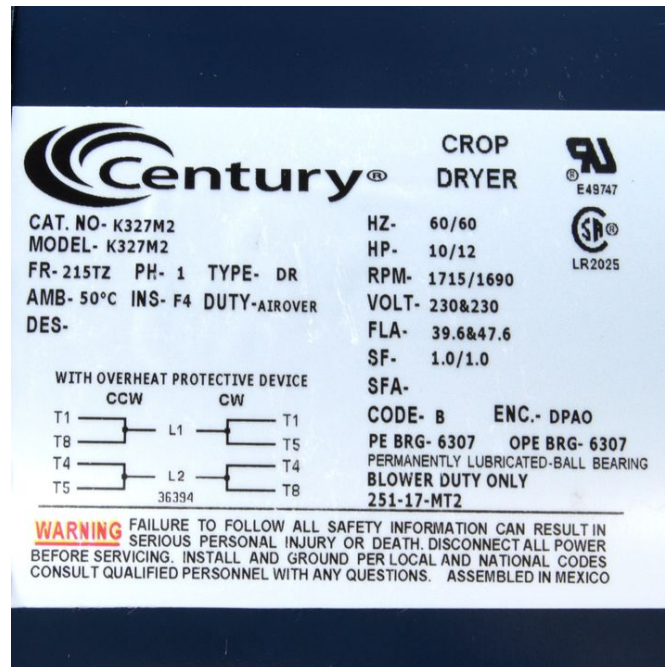


PRODUCT INFORMATION PACKET

Model No: K327M2

Catalog No: K327M2

Crop Dryer Motor, 10 HP, 1 Ph, 60 Hz, 230 V, 1800 RPM, 215TZ Frame, ODP



Regal and are trademarks of Regal Rexnord Corporation or one of its affiliated companies.

©2022 Regal Rexnord Corporation, All Rights Reserved. MC017097E

Nameplate Specifications

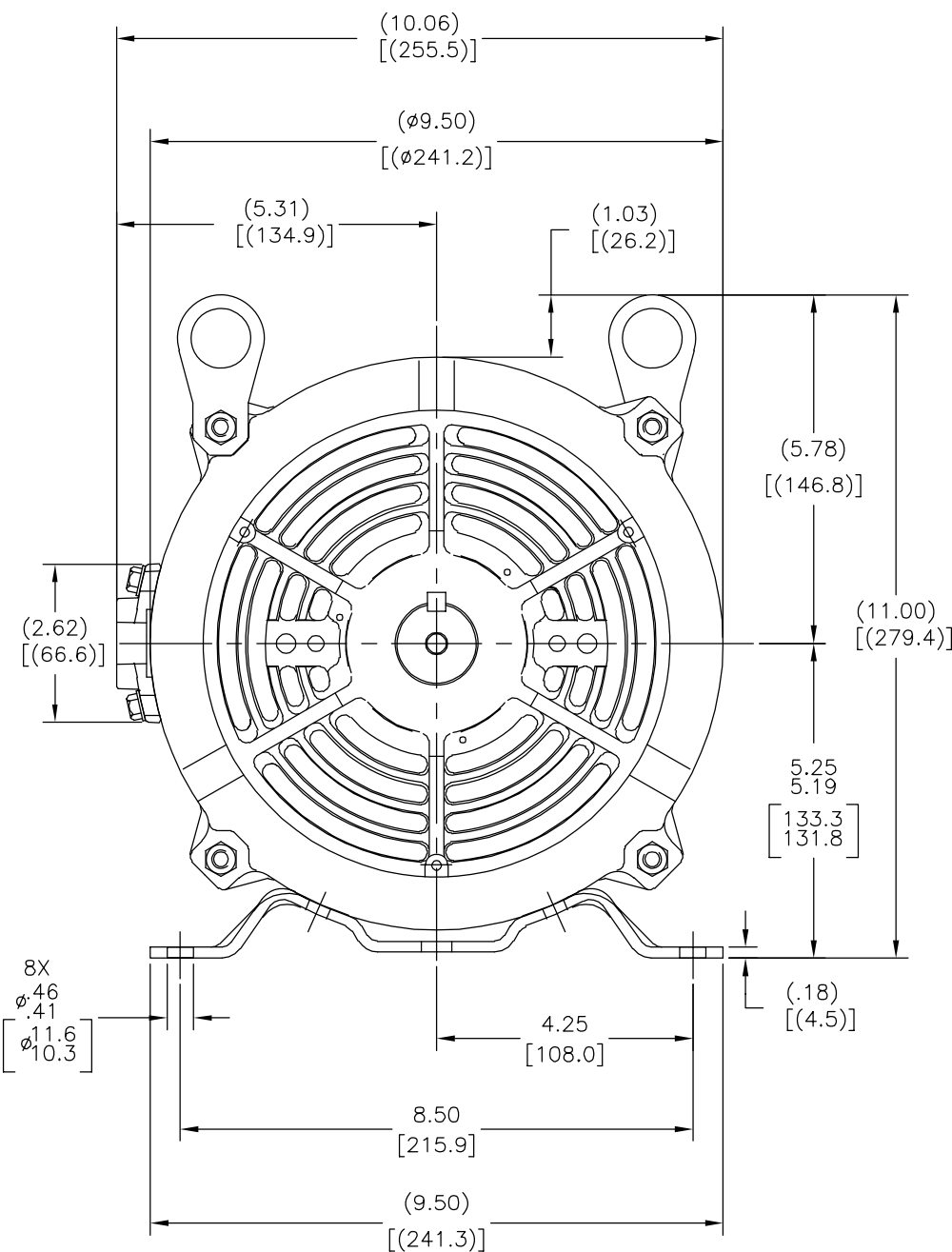
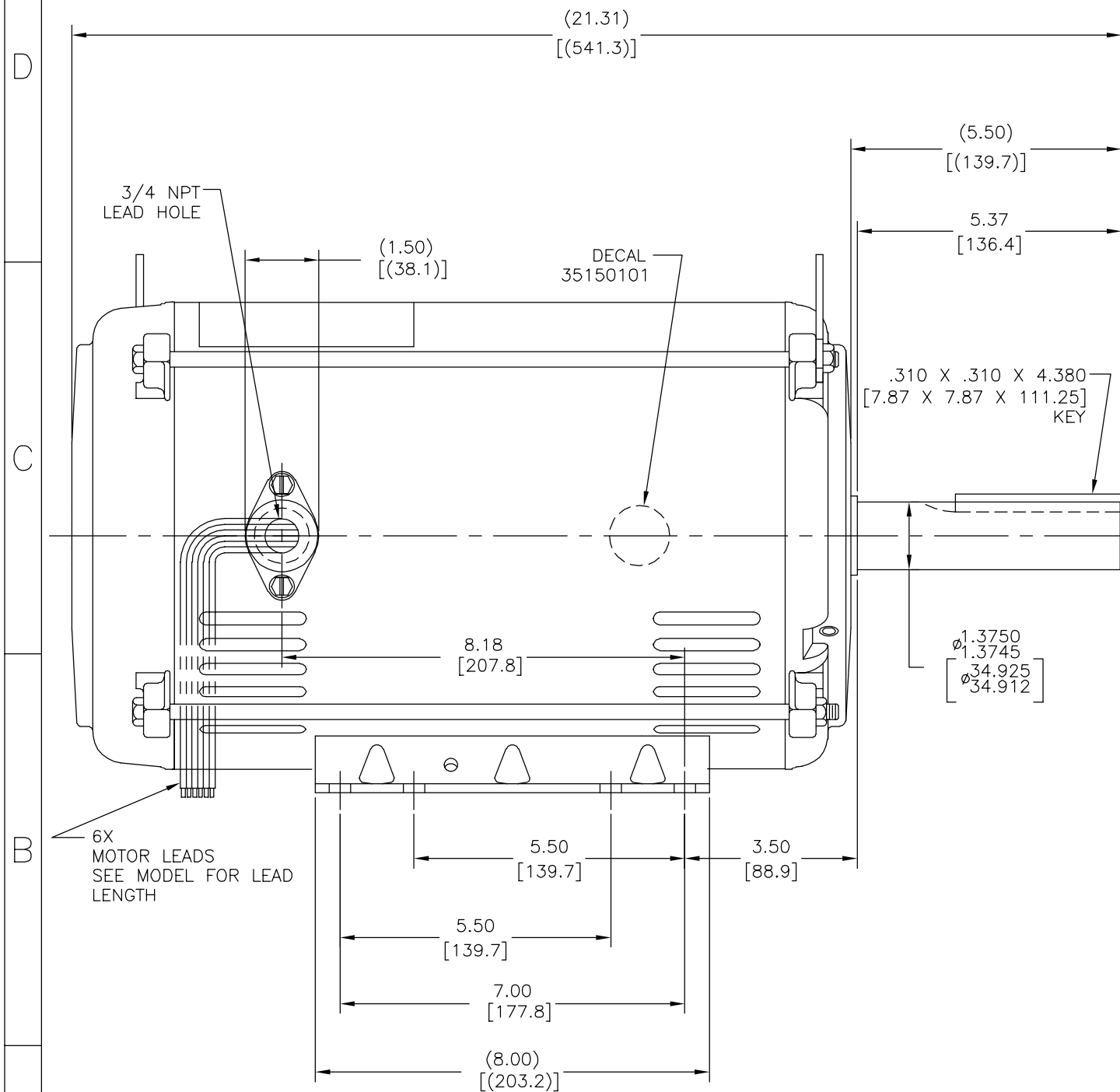
Output HP	10 Hp	Output KW	7.5 kW
Frequency	60 Hz	Voltage	230 V
Current	39 A	Speed	1715 rpm
Service Factor	1	Phase	1
Duty	Continuous Air Over	Insulation Class	F
Frame	215TZ	Enclosure	Open Drip Proof
Thermal Protection	No Protection	Ambient Temperature	50 °C
UL	Recognized	CSA	Y
CE	N	Number of Speeds	1

Technical Specifications

Electrical Type	DC Permanent Magnet	Starting Method	Across The Line
Poles	4	Rotation	Selective Counterclockwise
Mounting	Rigid Base	Drive End Bearing	Ball
Opp Drive End Bearing	Ball	Frame Material	Rolled Steel
Shaft Type	Keyed	Overall Length	21.32 in
Frame Length	12.40 in	Shaft Diameter	1.375 in
Shaft Extension	5.5 in		
Outline Drawing	K327M2-S01	Connection Drawing	D0000445-001

This is an uncontrolled document once printed or downloaded and is subject to change without notice. Date Created:09/08/2022

REV	ECO	REV BY	DATE	APPD	DATE
A	0029861	I.LOPEZ	01-17-2013	H.SANCHEZ	01-17-2013



NOTES:
1 NAMEPLATE TO BE READ FROM LEAD EXIT SIDE OF MOTOR

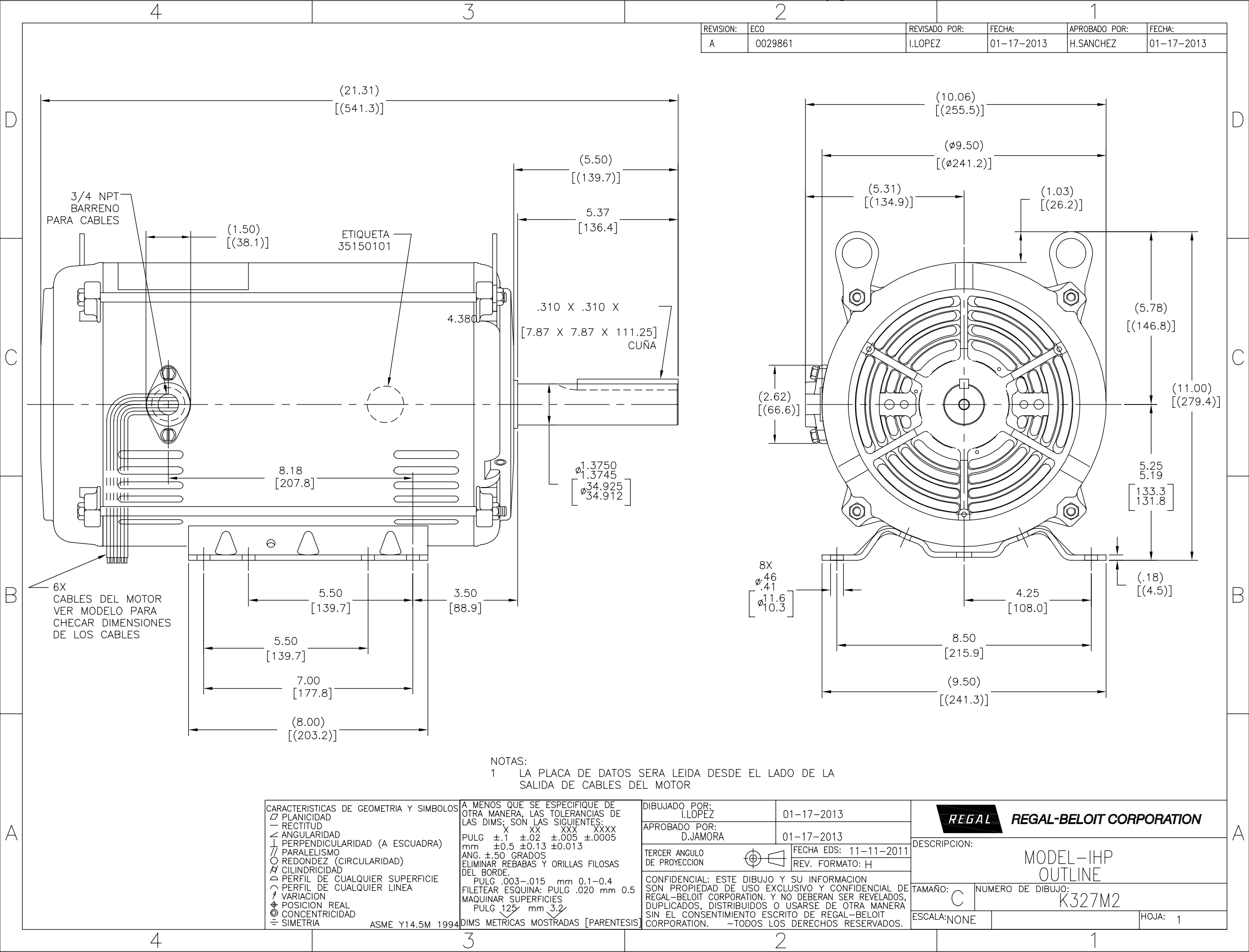
GEOMETRIC CHARACTERISTICS & SYMBOLS
□ FLATNESS
— STRAIGHTNESS
∠ ANGULARITY
⊥ PERPENDICULARITY (SQUARENESS)
// PARALLELISM
○ ROUNDNESS (CIRCULARITY)
⌀ CYLINDRICITY
△ PROFILE OF ANY SURFACE
⌒ PROFILE OF ANY LINE
⌀ RUNOUT
⊕ TRUE POSITION
◎ CONCENTRICITY
≡ SYMMETRY

ASME Y14.5M 1994

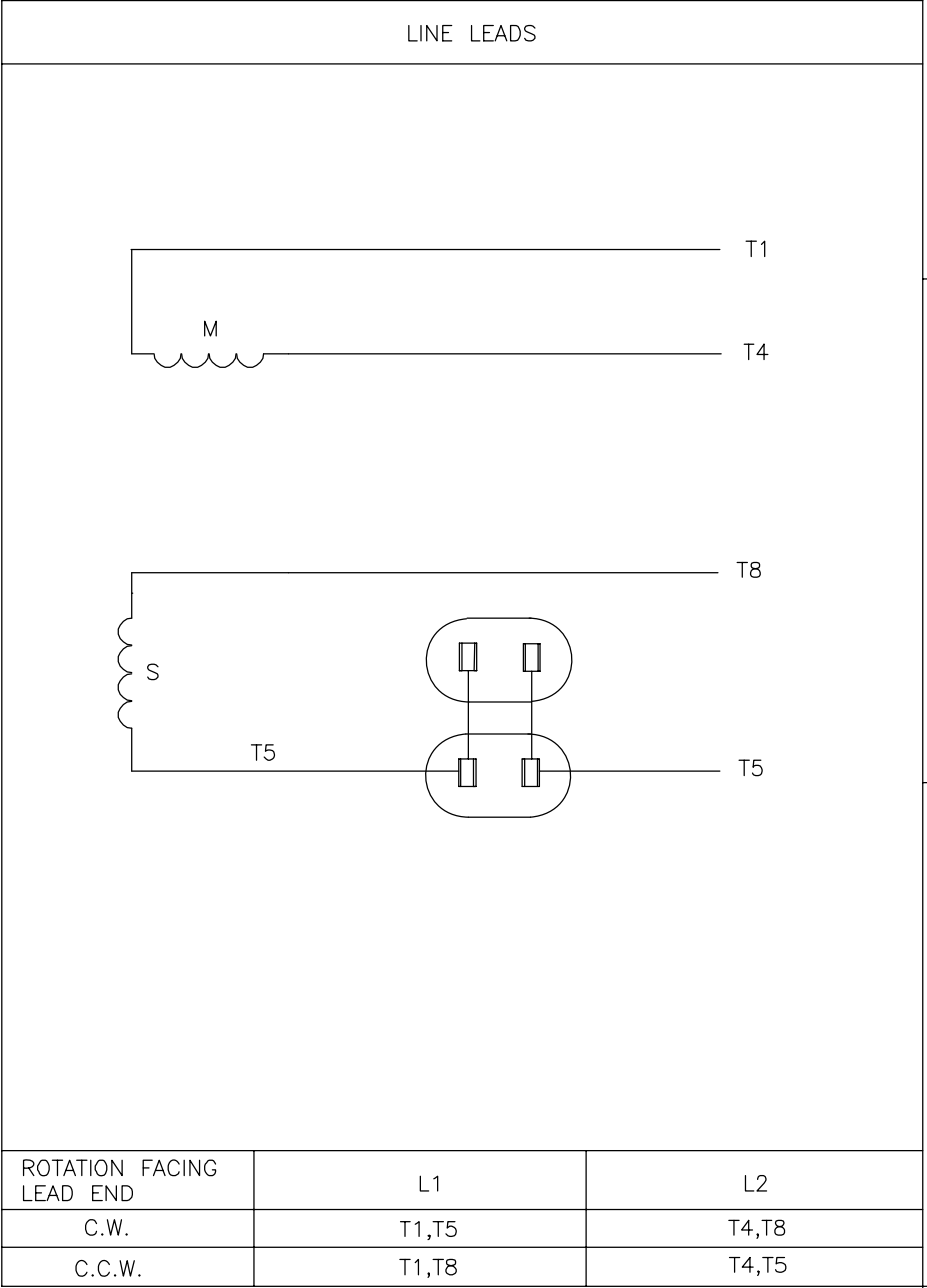
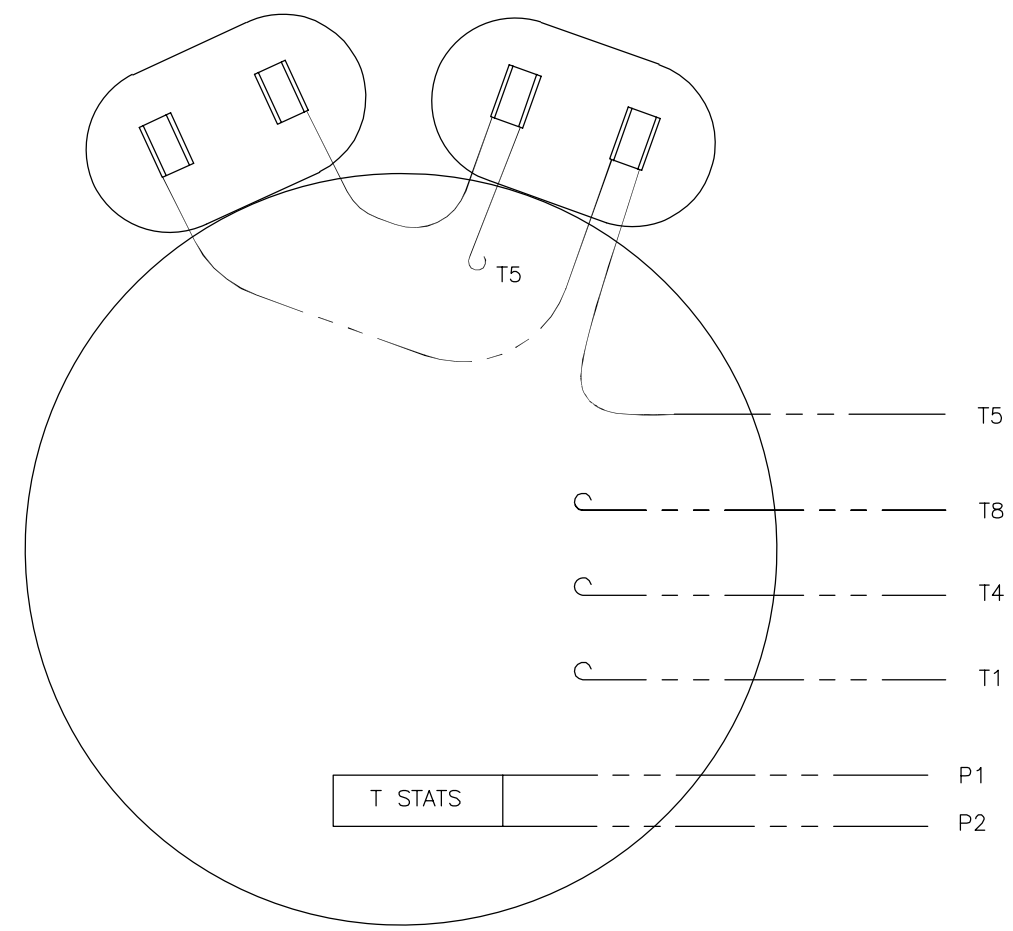
UNLESS OTHERWISE SPECIFIED
DIM. TOLERANCES ARE AS FOLLOWS:
INCH X XX XXX XXXX
mm ±.1 ±.02 ±.005 ±.0005
mm ±0.5 ±0.13 ±0.013
ANG. ±.50 DEG
REMOVE BURRS & BREAK SHARP EDGES:
INCH .003-.015 mm 0.1-0.4
CORNER FILLETS TO:
INCH .020 mm 0.5
MACHINE SURFACES:
INCH 125 mm 3.2
METRIC DIMS. SHOWN IN [BRACKETS]

DR BY: I.LOPEZ 01-17-2013
APPD: D.JAMORA 01-17-2013
THIRD ANGLE PROJECTION
EDS DATE 11-11-2011
FORMAT REV H
CONFIDENTIAL: THIS DRAWING AND ITS INFORMATION ARE THE EXCLUSIVE AND CONFIDENTIAL PROPERTY OF REGAL-BELOIT CORPORATION AND ARE NOT TO BE DISCLOSED, DUPLICATED, DISTRIBUTED OR OTHERWISE USED WITHOUT THE WRITTEN CONSENT OF REGAL-BELOIT CORPORATION. -ALL RIGHTS RESERVED.

REGAL **REGAL-BELOIT CORPORATION**
DESCRIPTION
MODEL-IHP
OUTLINE
SIZE C DWG NO K327M2
SCALE NONE SHEET 1



VIEW FROM OUTSIDE OF MOTOR AT SWITCH END.



DRAWING REVISION B	REVISION BY A.ARREOLA	DATE 02-24-2014	TOLERANCES UNLESS OTHERWISE SPECIFIED DEC. INCH mm ANGLE .X ±0.1 [±2.5] ±0.5° .XX ±0.02 [±0.51] .XXX ±0.005 [±0.127] .XXXX ±0.0005 [±0.0127] REMOVE BURRS & BREAK SHARP EDGES .003/.015 [0.076/.381] CORNER FILLETS .02 [1.51] MACHINED SURFACES .125 INCH 3.2 mm mm SHOWN IN [BRACKETS]	DRAWN BY: H.SANCHEZ	Regal Beloit America, Inc.
ECO 0046112	APPROVED BY M.AVILA	DATE 02-24-2014		DATE: 12-13-2012	
ECO DESCRIPTION UPDATED CONNECTION DIAGRAM				APPROVED BY: D.JAMORA	
COPYRIGHT REGAL BELOIT AMERICA, INC. ALL RIGHTS RESERVED. PROPRIETARY AND CONFIDENTIAL INFORMATION - THIS DOCUMENT IS THE PROPERTY OF REGAL BELOIT AMERICA, INC. ("OWNER") AND CONTAINS OWNER'S PROPRIETARY INFORMATION. ANY PERSON, CORPORATION OR OTHER FIRM RECEIVING IT IS DEEMED, BY RECEIVING IT, TO AGREE THAT IT, AND/OR ANY PART OF IT, SHALL NOT BE DISCLOSED TO ANY PERSON, CORPORATION OR OTHER ENTITY, DUPLICATED, AND/OR USED, EXCEPT AS EXPRESSLY APPROVED IN WRITING IN ADVANCE BY OWNER. THIS DOCUMENT SHALL BE RETURNED TO OWNER UPON REQUEST. IT MAY BE SUBJECT TO CERTAIN RESTRICTIONS UNDER APPLICABLE EXPORT CONTROL LAWS AND REGULATIONS.				DATE: 12-13-2012	
				PROCESS/FINISH	MATERIAL
				THIRD ANGLE PROJECTION	SIZE DWG NO C D0000445-001
					SHEET 1